



Thin floor plate is ideal for platform or podium construction in mixed-use projects

Metro-Deck (includes 2" topping)	Typical Span Lengths
8"*	up to 36'
10"	up to 36'
12"	up to 42'
14"	up to 46'
16"	up to 50'

Untopped sections and other depths and widths are easily accommodated. To meet your specific load requirements, please contact Metromont Specialty Products at 1.888.295.0383.

* Untopped section for roof



Metro-Deck installed on a CIP wall



Insulation can be removed providing accessibility to chase for MEP systems prior to field topping

METRO-DECK
CONCRETE BUILDING SYSTEM



Concrete framing systems have been utilized for decades in the commercial building market. The Metro-Deck precast/prestressed concrete framing system incorporates a floor and roof product that is based on proven engineering principles and applications.

The thin floor plate design offers all the benefits of commercially available concrete systems and much more. The wet cast floor and roof components are typically 8" to 16" deep and ten foot wide.

When the components are integrated with precast/prestressed columns, beams and load bearing walls the framing system can be competitive on projects of all sizes from mixed-use retail/condominium structures to multi-story office buildings and dormitories.

Why Metro-Deck?

- Thin floor plate design, minimal structural depth required for floor system
- Solid end: spanning large openings without the need for additional supporting structure
- Bottom surface: Steel form finish - ready for a variety of finishes
- Large openings are possible
- Wet cast product allows for cast-in embeds
- Fewer joints and less weight vs hollow core
- Speed of construction
- Competitive installed cost

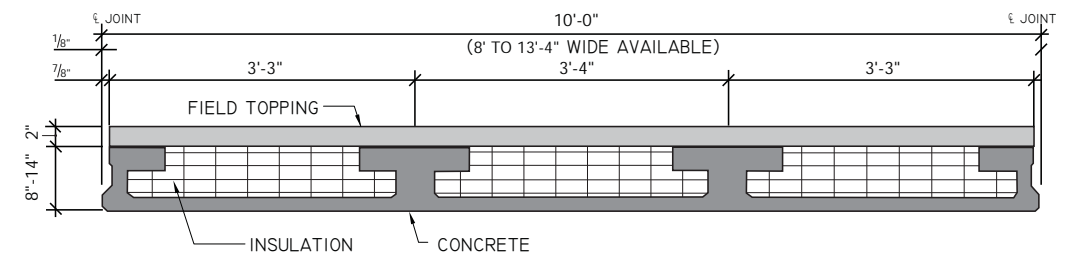
Urban infill office building with Metro-Deck concrete building system (cover photo shows project under construction)



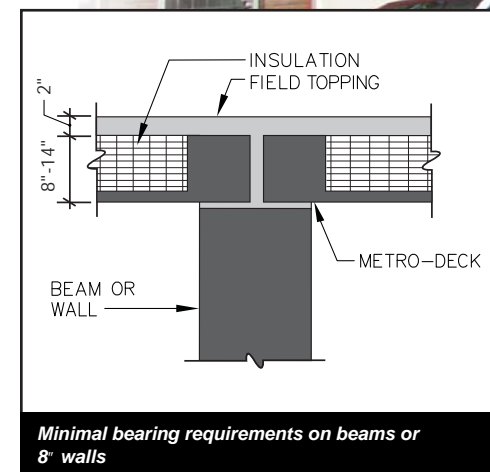
Comparison Chart: 8" Metro-Deck and 8" Hollowcore			
	Hollowcore	Metro-Deck	Comments
Solid End	No	Yes	Solid end condition allows for hidden connection, welded-end diaphragm, and spanning openings with fewer supports
End Bearing	Continuous	Continuous or Spot Bearing	Metro-Deck has an integral beam which reduces continuous bearing by 80%
Accessible Chase	None	2' wide between solid ends	Remove insulation in the field as required
Field Penetrations	As Required	As Required	HC significantly limited with strand 4" to 6" o.c. vs Metro-Deck, strand varies 1'-6" to 2'-6" o.c.
Large Openings	Possible	Yes	Integral beams with Metro-Deck, HC requires other framing
Cast-In Embeds	As Required	Yes	The cost to accomodate special requirements is lower with Metro-Deck
Insulation	None	6" - 12" EPS	Improves R-value, STC rating & IIC rating
Exposed Ceiling Finish	Yes	Yes	Production process provides steel form finish, joints 8' to 13'-4" o.c.
Fire Rating	Yes	Yes	Fire rated with topping
Product Width	4'	8', 10', 12', 13'-4"	Fewer joints & faster erection
Weight & Transportation		30% lighter/fewer loads	Lighter, more efficient cross section reduces shipping and installation, which equals less embodied energy
Erection		50%-70% fewer lifts	Up to 13'-4" wide components vs. 4' wide
Cost	Economical	Competitive installed cost	Metro-Deck can contribute to a reduced carbon footprint, lower operational cost and a zero-waste site

Reduction in carbon footprint

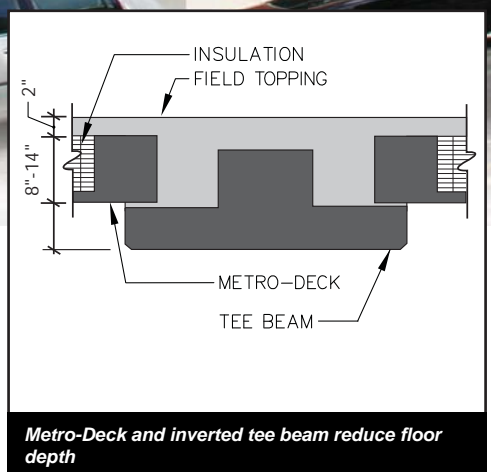
and lower embodied energy is possible by utilizing a more efficient product section – fewer materials means less weight, wider components and fewer truckloads/pieces to erect.



METRO-DECK SECTION



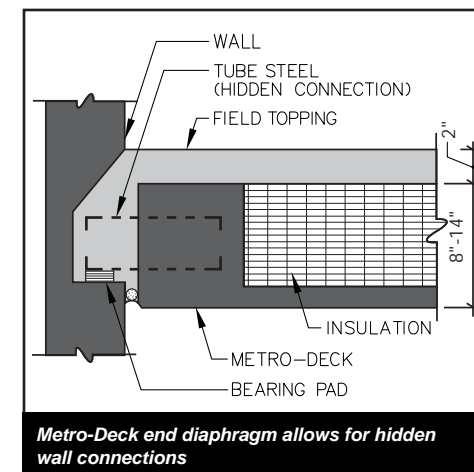
Minimal bearing requirements on beams or 8" walls



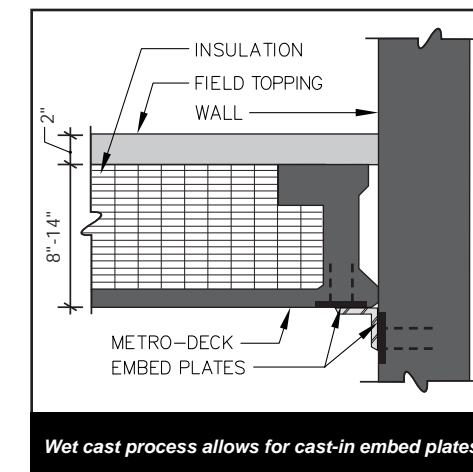
Metro-Deck and inverted tee beam reduce floor depth



Integral insulation improves R-value, STC rating, and IIC rating (image shown in manufacturing)



Metro-Deck end diaphragm allows for hidden wall connections



Wet cast process allows for cast-in embed plates



Concrete framing system illustrates minimal floor depth